

16th annual Neuroscience Symposium

Inaugural Stroke Symposium

Overview

This symposium is designed to update healthcare professionals on the latest neuroscience developments. The field of neuroscience is rapidly evolving, creating numerous improvements in diagnosing and treating acute and chronic neurological disorders.

Program objectives

At the conclusion of this symposium, the participant should be able to:

Neuroscience Symposium:

1. **Discuss** treatment options for myasthenia gravis.
2. **Differentiate** key features of epilepsy in children.
3. **Review** advances in neurosurgery.
4. **Discuss** appropriate recognition and treatment of acute delirium.
5. **Describe** current treatment options for migraine.
6. **Discuss** psychosis related to Parkinson's disease.

Inaugural Stroke Symposium:

7. **Review** potential opportunities for stroke treatment and pre-hospital stroke center routing.
8. **Describe** clinical indicators and imaging factors that impact decision making in determining treatment options for ischemic stroke.
9. **Identify** interventional stroke treatment techniques for stroke.
10. **Recognize** opportunities to enhance collaboration and build systems of care to improve stroke care and outcomes.
11. **Discuss** incidence of cryptogenic stroke and key diagnostic strategies to reduce stroke reoccurrence.
12. **Identify** potential areas of cognitive dysfunction and factors that can impact recovery following stroke.

Target audience

Neurologists, internists, radiologists, emergency medicine physicians, primary care physicians, nurses, respiratory therapists, EMT, MICT and other healthcare providers caring for patients with neurological disorders.

Continuing education

Physicians: Via Christi Hospitals in Wichita are accredited by the Kansas Medical Society to provide continuing medical education for physicians. Via Christi Hospitals in Wichita designate this live educational activity for a maximum of 13.25 hours of *AMA PRA Category 1 Credits*[™] (6.75 for Day 1 and 6.50 for Day 2). Physicians should claim only the credit commensurate with the extent of their participation in the activity.

Application for CME credit has been filed with the American Academy of Family Physicians. Determination of credit is pending.

Nursing: Via Christi Hospitals in Wichita are approved as a provider of continuing nursing education by the Kansas State Board of Nursing. This course offering is approved for 15.8 contact hours (8.0 for Day 1 and 7.8 for Day 2) applicable for RN, LPN and LMHT re-licensure. Kansas State Board of Nursing approved Provider Number: LT: 0062-0738.

EMT and paramedic: Kansas Board of EMS Continuing Medical Education credit is provided through Hutchinson Community College EMS Education.

Respiratory care practitioners: Via Christi CEU Evaluator approves education on behalf of the Kansas Respiratory Care Society, a chapter society of the AARC. Providership # KRCS 028.

Allied health professionals: Verification of attendance will be issued for hours attended.

Planning committee

Saad Kanaan, MD, committee chairperson

Kumar Reddy, MD

Dorothy Bybee, MSN RN MBA-HC NEA-BC

Kristina Willour, RN SCRNP

Donna Wilson, DNP APRN ACNS-BC CNRN

LeighAnn Mullin Persondek, MSN APRN ACNP-BC
CNRN ANVP

Shelley L. Lee, DNP BS RNC-NIC CMSRN BC

Cheri Sellers, education department assistant

Anita Yoakum, MHCL BS

16TH ANNUAL

Neuroscience Symposium

Friday, March 3, 2017

INAUGURAL

Stroke Symposium

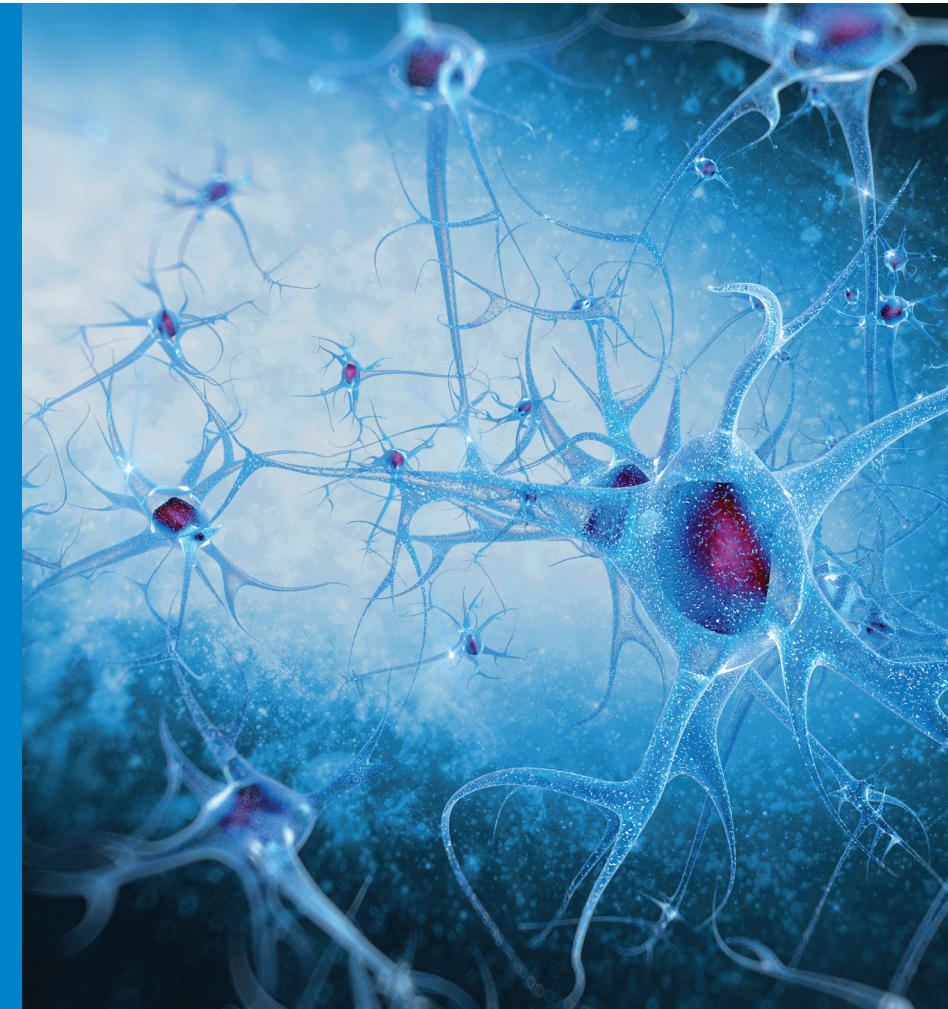
Saturday, March 4, 2017

Wichita Marriott
9100 E. Corporate Hills Drive
Wichita, KS 67207

Non-Profit Org.
U.S. Postage
PAID
Wichita, KS
Permit #607

Via Christi Hospitals Wichita, Inc.
Continuing Medical Education
929 N. St. Francis
Wichita, KS 67214-3882

Via Christi
HEALTH



16th Annual Neuroscience Symposium

Friday, March 3, 2017
Wichita Marriott
9100 Corporate Hills Drive, Wichita, Kansas

TIME	TOPIC	PRESENTER
7:30 a.m.	Registration and continental breakfast	
8 a.m.	Welcome and conference overview	Saad Kanaan, MD, Moderator
8:10 a.m.	Neuroendovascular-related Hemorrhagic Pathologies	Koji Ebersole, MD
9:10 a.m.	Seizure mimics in children	Bassem El Nabbout, MD
10:10 a.m.	Break and exhibits	
10:30 a.m.	Migraine	Saad Kanaan, MD
11:20 a.m.	Delirium: What we can and can't do	Rachna Kalia, MD
12:10 p.m.	Lunch (provided)	
1:10 p.m.	Current diagnosis and management of myasthenia gravis	Eduardo De Sousa, MD
2 p.m.	Psychiatric manifestations of Parkinson's disease	Cherian Karunapuzha, MD
2:50 p.m.	Break and exhibits	
3:10 p.m.	Intracerebral hemorrhage evacuation: Where we are and where we are going	Bradley Bohnstedt, MD
4 p.m.	Question and answer session	Faculty
4:20 p.m.	Evaluation and adjournment	

Via Christi Hospitals Wichita reserves the right to substitute faculty for warranted reasons.

Because it is difficult to control the temperature in meeting rooms, consider bringing a lightweight jacket or sweater for personal comfort.

Inaugural Stroke Symposium

Saturday, March 4, 2017
Wichita Marriott
9100 Corporate Hills Drive, Wichita, Kansas

TIME	TOPIC	PRESENTER
7:30 a.m.	Registration and continental breakfast	
8 a.m.	Welcome and conference overview	Kumar Reddy, MD, Moderator
8:10 a.m.	A new Comprehensive Stroke Center: What it means for Kansas	Saad Kanaan, MD
8:40 a.m.	EMS as partner in system of stroke care	John Gallagher, MD
9:30 a.m.	Ischemic stroke intra-arterial treatment update 2017	Richard Bellon, MD
10:20 a.m.	Break and exhibits	
10:40 a.m.	Taking it to the streets: Using mobile stroke units to treat stroke	Wendy Dusenbury, DNP APRN-BC CNRN ANVP-BC
11:30 a.m.	Keep in the loop: Cryptogenic stroke and atrial fibrillation	Sharon Biby, MSN APRN ANVP-BC AGPCNP-BC
12:20 p.m.	Lunch (provided)	
1:10 p.m.	Cognitive and functional impact of stroke	Robin Heinrichs, PhD LP ABPP CN
2 p.m.	Rehabilitation following stroke	Reginald Fears, MD
2:50 p.m.	Break and exhibits	
3:10 p.m.	Survivor panel	Panel
3:40 p.m.	Question and answer session	Faculty
4 p.m.	Evaluation and adjournment	

Faculty

16th Annual Neuroscience Symposium

Bradley Bohnstedt, MD
Department of Neurology
University of Oklahoma Health Sciences Center, Oklahoma City

Eduardo De Sousa, MD
Department of Neurology
University of Oklahoma, Health Sciences Center, Oklahoma City

Koji C. Ebersole, MD
Director of Endovascular Neurosurgery, Assistant Professor Neurosurgery and Radiology
The University of Kansas Health Systems

Bassem El-Nabbout, MD
Director of Neurology Via Christi Hospitals Wichita, Pediatric Neurology Via Christi Clinic, Wichita

Rachna Kalia, MD
Department of Psychiatry and Behavioral Sciences
The University of Kansas School of Medicine, Wichita

Saad Kanaan, MD
Stroke Program Medical Director, Via Christi Hospitals, Wichita
Staff Neurologist, Via Christi Clinic, Wichita

Cherian Abraham Karunapuzha, MD
Assistant professor, Director of Parkinson Disease/Movement Disorders Division Department of Neurology, The University of Oklahoma Health Sciences Center

Inaugural Stroke Symposium

Richard Bellon, MD
Radiology Imaging Associates, PC, Englewood, Colorado

Sharon Biby, MSN APRN ANVP-BC AGPCNP-BC

Nurse practitioner/advanced-practice stroke nurse, Cone Health Stroke Services, Greensboro, North Carolina

Wendy Dusenbury, DNP, APRN-BC, CNRN, ANVP-BC

Assistant Professor, Wichita State University, Wichita, Kansas
University of Tennessee Clinical Services Mobile Stroke

Reginald Fears, MD
Via Christi Clinic on Founders' Circle, Via Christi Rehabilitation Hospital, Wichita, Kansas

John Gallagher, MD
EMS System Medical Director
Wichita-Sedgwick County EMS System

Robin Heinrichs, PhD LP ABPP CN
Assistant professor, director of Neuropsychology Training and Laboratory, University of Kansas School of Medicine

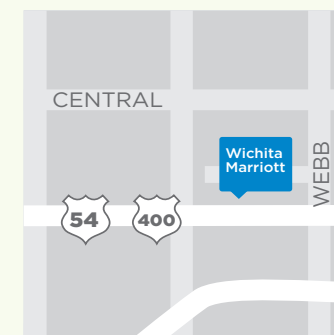
Saad Kanaan, MD
Stroke Program Medical Director, Via Christi Hospitals, Wichita
Staff Neurologist, Via Christi Clinic, Wichita

Kumar Reddy, MD
Director of Neuro Interventional Radiology Via Christi Hospitals
Interventional Radiology Kansas Imaging Consultants

Hotel accommodations

A discounted rate of \$109 has been arranged with the Wichita Marriott for this conference. Room reservations must be made directly with the hotel no later than **Thursday, Feb. 17th**, in order to receive the discounted rate.

Reservations can be made by calling the hotel directly at 316.651.0333. You may also call Marriott's Reservation Center at 1.800.228.9290; if calling directly, be sure to mention the Neuroscience Symposium.



Fun things to do here

Check out visitwichita.com to discover fun things to do in Wichita, Kansas.

Registration

Please select when you will attend:

16th Annual Neuroscience Symposium (day 1)
Inaugural Stroke Symposium (day 2)

Friday and Saturday, March 3 and 4, 2017

1. Register

Name _____
(as appears on license)

Address _____

City _____

State _____ ZIP _____

Email _____

Day phone _____

Evening phone _____

Agency or institutional affiliation _____

Specialty (physician) _____

Please check appropriate category and provide professional license #:

- Physician.....\$135 or \$210 both days
 PA-C.....\$75 or \$115 both days
 APRN.....\$75 or \$115 both days
 Nurse/RT/allied health/non-VC (circle one).....\$75 or \$115 both days
 Via Christi Health employee (non-MD, DO).....\$65 or \$100 both days
 Resident/medical student.....\$40 or \$60 both days

License number _____

2. Pay

Registration fee enclosed _____

Payment method: Discover Visa
 MasterCard American Express

Card # _____

Exp. date _____ Security code _____

Authorized signature _____

3. Mail

Detach and mail registration form with fee to:

Nurse/RT/paramedic/EMT/allied health:

Make checks payable to Via Christi Hospital and send to:

Via Christi Health Connection
929 N St Francis, Suite 2128
Wichita, KS 67214

To register with a credit card, call Health Connection 316.689.5700 (choose option 2). Registrations may be faxed to 316.268.5853.

Physician/PA/APRN/resident/med student:

Make checks payable to Via Christi Hospital and send to:

Via Christi Hospital Clinical Education
929 N. St. Francis
Wichita, KS 67214-3882

To register with a credit card, call Via Christi Clinical Education at 316.268.5196 or 800.362.0070, ext. 5196. Registrations may be faxed to 316.291.7872.

Check here if you would like a vegetarian meal.

Refund policy

Cancellations received at least three days prior to conference: registration paid, less a \$10 processing fee. Cancellations received one to two days prior to conference: 50 percent of registration paid. Cancellations or no-shows the day of conference: no refund.

